

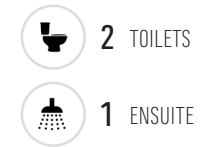
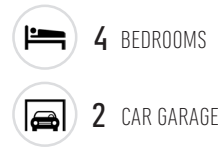
Whio

4 Bdrm / 225m²

This executive home combines modern convenience and space with a sleek urban profile. An atrium connects the living areas on the ground floor with the master bedroom area above, which features an ensuite and generous walk-in wardrobe.

KEY FEATURES OF THIS HOME

- Weatherboard cladding
- Open plan living
- Separate lounge



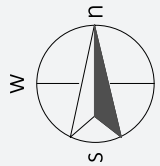
See floor plans on reverse



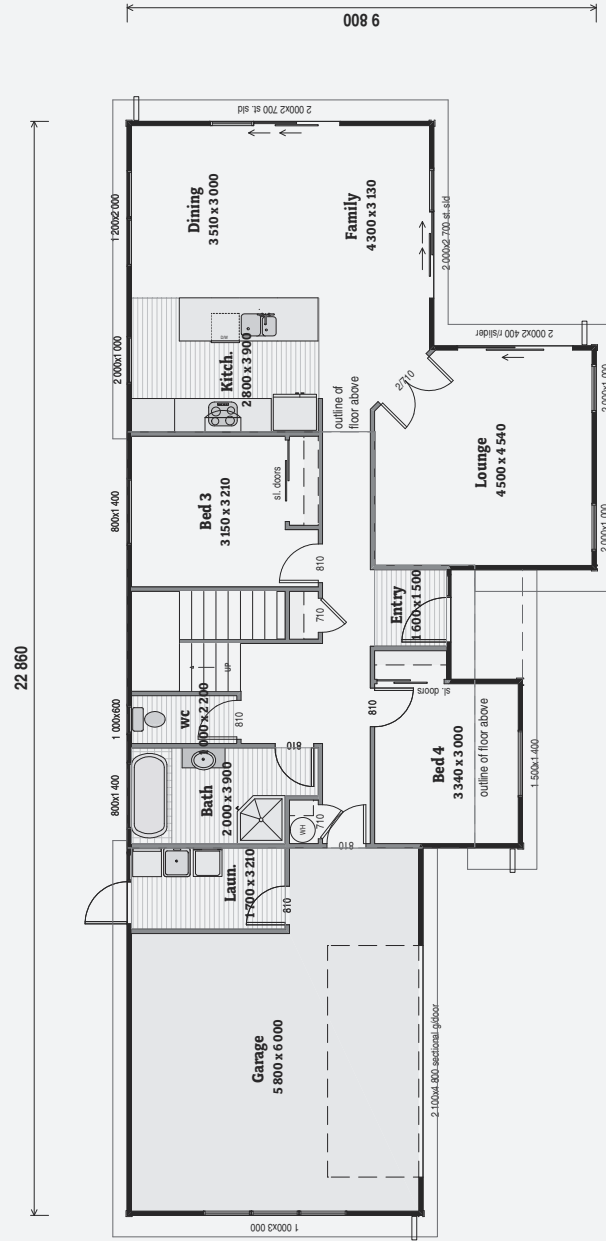
Always check the LBP Register to ensure your building practitioner is licensed.

Certified Plans are brought to you by New Zealand Certified Builders.

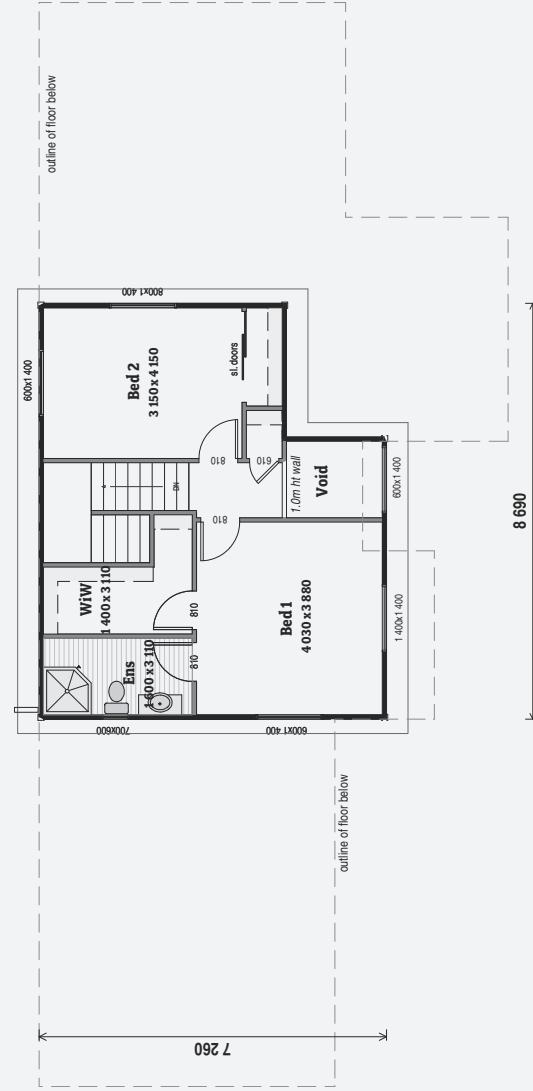
www.certifiedplans.co.nz



Elevation Guide



Ground Floor Area
167.9m² o/frame



First Floor Area
57.2m² o/frame

